

Leyton Orient

Football Club Ltd.



FOOTBALL LEAGUE—DIVISION II

SEASON 1963-64

LEYTON ORIENT

v.

SWINDON TOWN

Saturday, 28th March, 1964

Kick-off 3.00 p.m.

Official



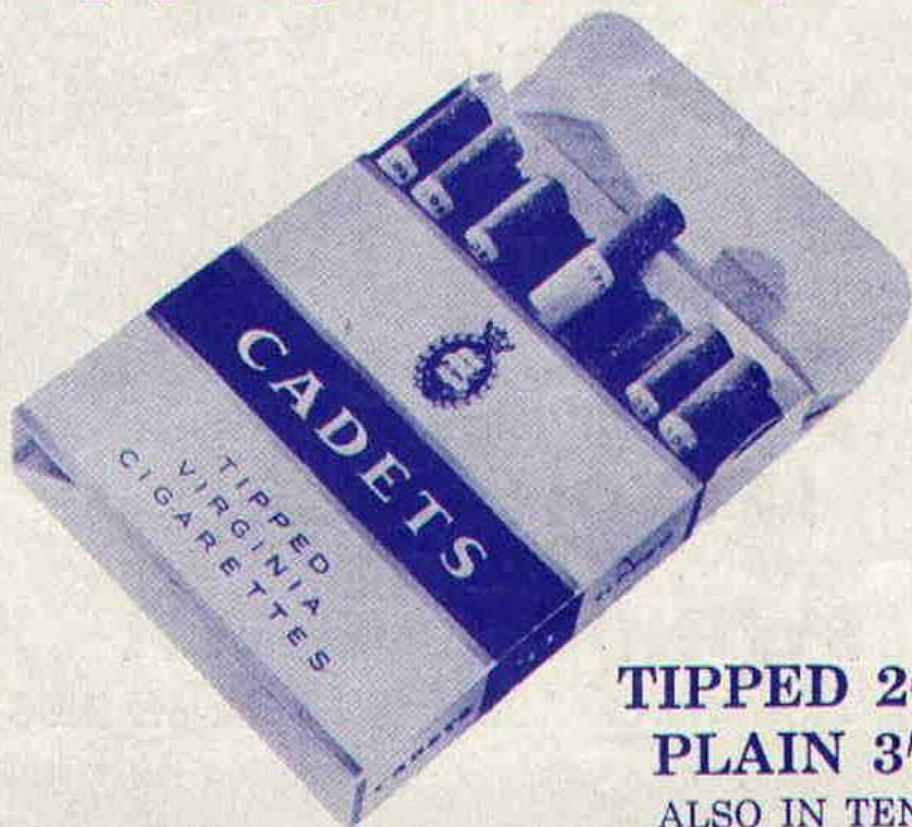
Programme



From the makers of Senior Service

CADETS

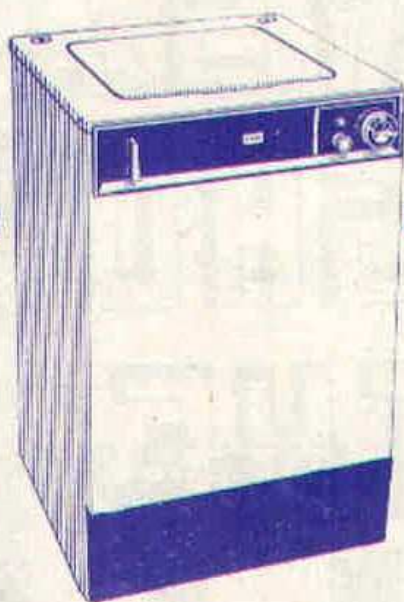
bring quality to smaller cigarettes



TIPPED 2/10
PLAIN 3/5
ALSO IN TENS

THE BIG LINE-UP

Three stars that combine to do the perfect laundry job, keep any team's kit clean and neat:



PARNALL

SPINWASHER

Washes, rinses, spin-dries all in one tub. Neat, compact super efficient.



PARNALL

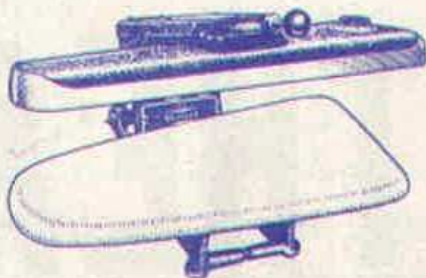
DE LUXE TUMBLER DRYER

Dries-ironing dry, ready to wear or put away.

PARNALL

EZY-PRESS IRONER

Gives a crisp, smooth finish to the whole wash.



For details contact: Electrical Division of Radiation Limited
Radiation House · North Circular Road · London NW10

A Radiation Product

THERE IS
ALWAYS A
GOOD SHOW
AT THE
SAVILLE
THEATRE

Leyton Orient Football Club

LEYTON STADIUM, BRISBANE ROAD, E.10

President : F. John Young, Esq.

Chairman : H. S. Zussman, Esq. Vice-Chairman : F. F. Harris, Esq.

Directors :

C. Bent-Marshall, Esq. H. E. Lea, Esq. A. E. Page, Esq.
B. Delfont, Esq. L. Grade, Esq.

Medical Officer : Dr. B. Green

Secretary : George A. Hicks

Manager : B. R. V. Fenton

Telephone : LEYtonstone 1368

ORIENTAL CHATTER

By "FORESTER"

After the passing of many, many seasons, Orient are pleased to renew the acquaintances of Swindon Town F.C., and extend a very cordial welcome to the club's directors, officials, players and supporters this afternoon. It was way back in the old Third Division days that the two clubs last met in a League match.

HACKNEY GAZETTE

BEST for Sports, Local News, Small Ads.

Published — Tuesdays and Fridays

Swindon, of course, won promotion most deservedly to the Second Division last season, finishing runners-up to Northampton Town in the Third Division. The accent has been on youth at County ground and no one will deny them their success and achievement as one of the most modern and go-ahead clubs in the Football League. Their first season in the Second Division has been most satisfactory, being well up in the table. Earlier this season Orient were beaten 5-0 by the "Railwaymen". The O's hope to give a much better account of themselves this afternoon, but realise they may be in for a hard tussle.

You will have read in the Press, no doubt, of the 4/- increase in the price of admission to Football League matches at all grounds in London next season. This was agreed by representatives of all London clubs, First, Second, Third and Fourth Divisions, at a meeting at Highbury. Orient Secretary, George Hicks, who attended the meeting, wants me to make it quite clear that the 1/- increase to be made is the MINIMUM admission charge to the ground. It does not apply in any way to charges being made for admission to the stands.

Mr. Hicks also made it very clear to me that the decision to put up the price to 4/- has been forced on the clubs by the ever-rising costs which face them nowadays. Higher wages, greater overhead expenses and other costly incidentals make a tremendous demand on clubs' resources, who rely to a large extent on their "gates". And in most cases these are, of course, once a fortnight.

Naturally, there are "gates" and "gates". They rise and fall according to appeal and attraction, while the weather also plays a major part. Competition has also to be allowed for and happy is the club that can rely on a consistent, average attendance that "keeps their head above water".

Orient, like so many other League clubs, are feeling the pinch at the present time so far as finance is concerned, and with "gates" showing a decline the strain on resources is inevitable. The recent

League match against Scunthorpe United "attracted" one of the worst-ever attendances to Brisbane Road—4,516. True, it was a miserable day, incessant rain and a cold wind. It took us back into the "bad Old Days" in the Third Division, although such a "gate" way back would have been considered "shocking", and three or four thousand below average.

At a rough estimate one would say it takes around £1,500 a week to run this club, including wages of players, the staff, and overheads etc. You certainly can't meet your commitments on an attendance like that at the Scunthorpe match. It is a dire problem which calls for action. Orient, like the other London clubs, are most reluctant in having to resort to increased admission charges, but . . .

We welcome a newcomer to the Orient playing staff in Ted Phillips from Ipswich. No stranger, indeed. He joined Orient a fortnight ago today. Born at Leiston, Suffolk, Phillips played a major role in Ipswich gaining championship honours a couple of seasons ago. He scored 28 goals during that campaign. He is an expert dead ball kicker, and a penalty-taker specialist.

Phillips was signed the day after Gordon Bolland was transferred to Norwich City. Bolland, who came to Brisbane Road, via Chelsea, was with Orient for just about a year. In moving to Norwich he will not be so far from his birthplace at Boston in Lincolnshire. We wish both players well at their new clubs.

Remember, Please, Orient have a rearranged League match with Sunderland, promotion-seekers, at this ground on April 6, k.o. 7.30 p.m.

And so to the match. Please encourage the players with **UP, UP, UP the O's.**

AND, REMEMBER, PLEASE, KEEP OFF THE PITCH AT ALL TIMES.

LEYTON ORIENT — Blue and White

1		
MIKE PINNER		
2	3	
STAN CHARLTON	MICHAEL HOLLOW	
4	5	6
MAL. LUCAS	SID. BISHOP	CYRIL LEA
8		10
HARRY GREGORY		TED PHILLIPS
7	9	11
TERRY McDONALD	DAVE DUNMORE	MALCOLM MUSGROVE

Referee:
J. R. LOYNTON
Solihull

Linesmen:
Red Flag—**R. C. Challis**,
Tonbridge
Yellow Flag—**E. F. M. Merchant**,
Colchester

11	9		7
ROGERS	HODGSON		SUMMERBEE
10		8	
ATKINS		HUNT	
6	5		4
SMART	HALLETT		MORGAN
3		2	
TROLLOPE		DAWSON	
1			
OAKLEY			

SWINDON TOWN—Red Shirts, White Shorts

HALF-TIME SCORES

<p>A Birmingham v. Chelsea.....</p> <p>B Fulham v. Tottenham.....</p> <p>C Man. Utd. v. Wolves.....</p> <p>D West. Brom. v. West Ham.....</p> <p>E Charlton v. Northampton.....</p> <p>F Derby v. Leeds.....</p> <p>G Grimsby v. Bury.....</p>	<p>H Huddersfield v. Rotherham.....</p> <p>J Middlesbrough v. Scunthorpe.....</p> <p>K Preston v. Man. City.....</p> <p>L Southampton v. Norwich.....</p> <p>M Swansea v. Cardiff.....</p> <p>N Coventry v. Oldham.....</p> <p>P C. Palace v. Bournemouth.....</p>
---	---

SWINDON TOWN PEN PICTURES

JOHN TROLLOPE. A local boy who joined the Swindon ground staff from school. Was selected for the first team in 1960/61 season and has been ever present since.

TERRY WOLLEN. Another local boy who made his first team debut at sixteen years of age. He played the majority of first team games during 1960/61 and last season.

KEITH MORGAN. A strong attacking wing half who joined Swindon as a youth from Westbury. Has missed very few matches since 1960. He is team captain.

ERNIE HUNT. Joined the clubs ground staff from school. He is a player of outstanding ability, for whom the club has had many offers, top club goal scorer for past three seasons. English Under-23 international.

MIKE TURNER. Demobbed from the R.A.F. this season, he joined the club whilst still on the books of Dorchester Town. Took over in goal last season and is now regular choice.

OWEN DAWSON. Signed from Portsmouth in 1963, has been regular full back until recent injury. A former English youth international.

KEN McPHERSON. Oldest player of the Swindon side. Signed from Newport County in 1961 as a centre forward, but has successfully been converted to one of the best centre halves in the division.

BOB WOODRUFF. Locally born player who came to the Town direct from the Swindon schools boys team. Has also played in the forward line, and has often attracted offers from the big clubs.

MIKE SUMMERBEE. Born Cheltenham. Another product from Swindon's youth policy. Another player who is attracting much attention.

ROGER SMART. Yet another locally born player who joined the club straight from Swindon's school team, plays either wing half or forward.

JOHN STEVENS. He only signed professional term this season. But played as an amateur in fourteen of Swindon's promotion games and scored seven times.

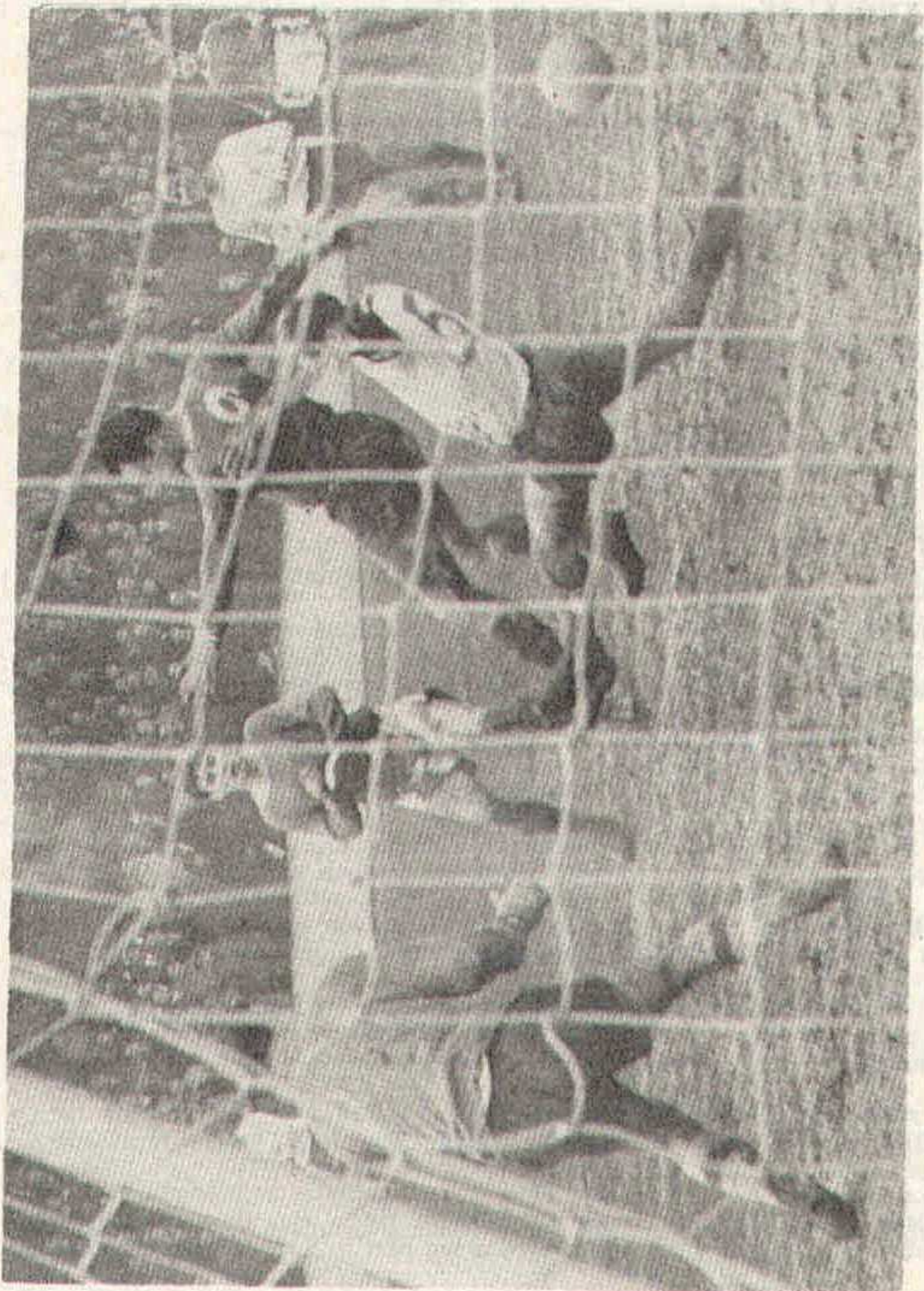
BILL ATKINS. Joined Swindon from Aston Villa at the end of the 1958-59 season. A strong ball playing forward, he played several representative games while in the Army.

DON ROGERS. At 17 he is the baby of the side. Has been capped for England Youth several times and played a big part in Swindon's promotion.

ALAN SPROATES. Born Hetton. One of Swindon's close season signings, his previous club being Sunderland. A ball playing wing half.

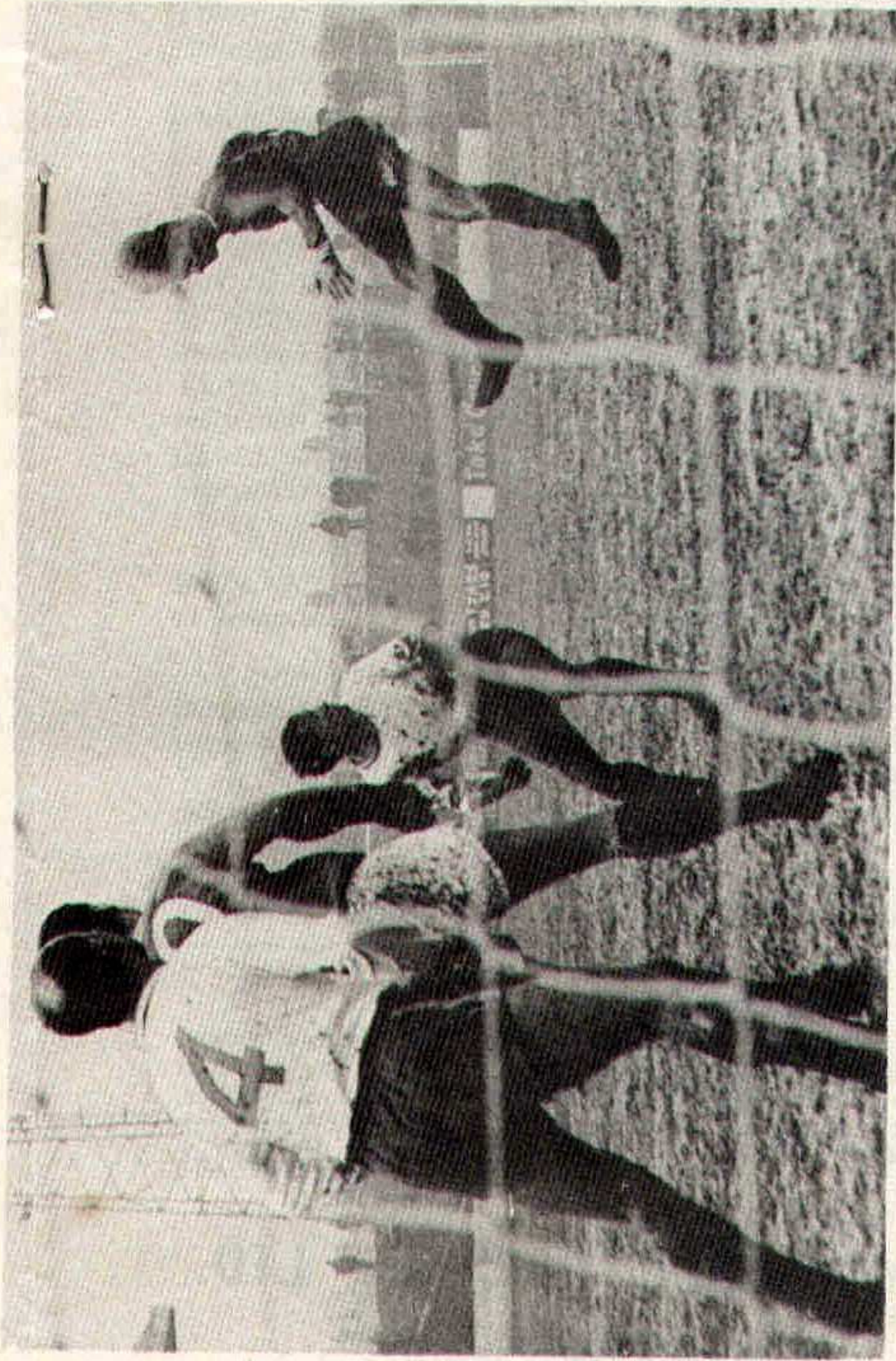
TOM HALLETT. Born in Wales. Tom was transferred from Leeds United, also in the close season. Very fast for a full back.

STANDARD TONE PICTURE



STANDARD TONE PICTURE

STANDARD TONE PICTURE



Top picture we see **DAVE DUNMORE** just failing to connect with a low cross during the recent match against Scunthorpe, but in the picture below **DAVE** makes no mistake with this well taken header.

Pictures by Stratford Express



JIMMY SCOTT

Born Dagenham. Played as an amateur with Chelsea before joining the Orient at the beginning of the season. Played his first league game at the age of seventeen against Sunderland at Roker Park, on 16th November, 1963. But he had the misfortune to break his wrist in the F.A. Youth cup match versus Dagenham.

BENT-MARSHALL GARAGES LTD.

AUSTIN & WOLSELEY AGENTS



665-667 HIGH ROAD, LEYTON, E.10

Telephone: LEYtonstone 6642/3

TO-DAY'S VISITORS

To-day we have the great pleasure of welcoming Swindon Town to our stadium. To-days match will be somewhat of a revenge match for the Orient, because "Bert Heads" boys slammed us earlier in the season by five goals to nil at the County Ground which is the "Railwaymens" home ground.

The Swindon club was formed in 1881, and they turned professional in 1894. They held continuous membership of the Southern League, there were some hard struggles for them in the turn of the century. But from 1907 they began their "golden era", by winning the Championship twice and also being F.A. Cup semi-finalists twice. In 1920 the Town became founder members of the Third Division South and they remained there until the league was reformed in 1958, when they joined the Third Division and continued their membership until last season when they gained promotion to their present position by being runners-up.

And they are at present enjoying a very good first season. It looks like manager Bert Head's youth policy is working very well at Swindon.

Some of our older spectators may remember some of the famous players who wore the Swindon colours. Harold Fleming (nine caps for England), Grenville Morris (twenty one caps for Wales), and John Walker (nine caps for Scotland), just a few that may bring nostalgic memories.

FORTHCOMING ATTRACTIONS

Football Combination

MILLWALL

Saturday, 4th April, 1964

Kick-off 3.0 p.m.

Division II.

SUNDERLAND

Monday, 6th April, 1964

Kick-off 7.30 p.m.

70-DAYS VISITORS

Scunthorpe's goalkeeper Ken Jones smartly taking a high cross despite a desperate effort by Gordon Bolland, seen on his last appearance in the club's colours.



Scunthorpe's goalkeeper **KEN JONES** smartly taking a high cross despite a desperate effort by **GORDON BOLLAND**, seen on his last appearance in the club's colours.

Picture by Guardian Newspapers



BENNY FENTON

Born Forest Gate. Started his playing career with West Ham United and after a short spell with Millwall joined Charlton Athletic in 1947, and was appointed Player-Manager of Colchester United in 1955.

SPECIAL DATE FOR YOUR DIARY

THE ANNUAL DINNER AND DANCE
OF THE SUPPORTERS CLUB
WILL BE HELD ON

FRIDAY, 1st MAY, 1964

at

**THE ADELPHI ROOMS, L.C.S.
STRATFORD BROADWAY**

Tickets 30/- per person.

Leyton Orient Supporters Coach to Charlton on Easter Monday, leaves Hackney Town Hall 12.45 p.m., Marsh Hill Post Office 12.50 p.m., Leyton Stadium 1.00 p.m. Fare 3/-. Tickets from Supporters Club Huts.

Leyton Orient Supporters Coach to Leeds on Saturday, April 4th, leaves Hackney Town Hall 7.00 a.m., Marsh Hill Post Office 7.10 a.m., Leyton Stadium 7.15 a.m. Fare 10/-. Tickets from Supporters Club Huts.

The Supporters Club presents PHIL WHITE'S BENEFIT MATCH. LEYTON ORIENT v. EX ORIENT XI on TUESDAY 21st April. Kick-off 7.30 p.m. Price of tickets: Stand 5/-, Terraces 2/6. Tickets available from Supporters Club.

New signing, Tony Harding who is an amateur with Barnet. Tony is an inside forward and is a full Amateur International, he will be playing for the Orient shortly.

LEYTON ORIENT POOLS SCHEMES

CASH PRIZES OF

£ 300 PLUS

OFFERED WEEKLY

Why not contact the Pools Office immediately :—

LEYTON STADIUM

Brisbane Road, Leyton, E.10

Telephone : LEY 1368

THERE IS
ALWAYS A
GOOD SHOW
AT THE
PRINCE
OF WALES
THEATRE

The
world
to
master

He may not have the touch of a master, but his achievement is probably as great — he is a Spastic. The muscle-controlling part of his brain was damaged at birth, and he had to be taught with patience, care and affection how to use his limbs.

The National Spastics Society has announced a £2 million endowment for the world's first Child Health Research Unit under the Prince Philip Professor of Paediatric Research.

Will you help us in this work

Loving care costs money



Spastics need Your Help Now!

Best Reports and Pictures

OF ALL

HOME and AWAY matches

IN THE

Stratford Express

EVERY FRIDAY



LARGEST LOCAL SALE IN
EAST LONDON & SUBURBAN ESSEX

BRITISH RAILWAYS

CHEAP FARES
FOR PARTY OUTINGS

If your party numbers 8 or more for a day outing by any train, British Railways can offer:—

25% reduction on ordinary return fare.

Guaranteed reserved seats.

Arrangements for meals, coach tours etc.

Free rail tickets to organisers of large parties (25 or more passengers).

Representative will call if desired.

**ASK YOUR LOCAL STATION MASTER
FOR FULL DETAILS**

BRITISH RAILWAYS